



Implementation of Research Governance in Social Care

Presentation for 'Getting Evidence
into Practice' SSRG event
(Stirling 28-06-04)



What is Research Governance?

- An initiative to enhance the regulation and improve the quality of health and social care research
- Sets standards
- Formalises the responsibilities of all those involved in research



Context for implementation

- Complexity of social care and social care research
 - Stakeholders
 - Funding structures
 - Approaches to research
- Lack of infrastructure
 - Ethics/methods review
 - Volume of research (Case studies)
 - Readiness to meet requirements of RGF (Baseline assessment)



Implications for implementation

- Scope
 - Breadth
 - Depth
- Ethics and methods review
 - Separate systems
 - Power relationships
- SEARIG collaborative approach to Research Governance in social care



DH implementation plan

- Staged approach
 - External
 - Internal
- Inclusive definition
 - Children's services?
 - Types of activities
- Ethics review
 - Local/national focus
 - Uniform framework/accredited approaches



What Have West Sussex Social & Caring Services Done?

- Taken a proactive approach
- Registered as Research Sponsor with DOH
- Developed a policy & procedure re Research Governance which can be adopted at corporate level
- Produced an Application Pack
- Consultation with UCC re Training
- Consultation with UCC & Brighton re contracts
- Raised awareness - leaflet/intranet etc.



What does it include?

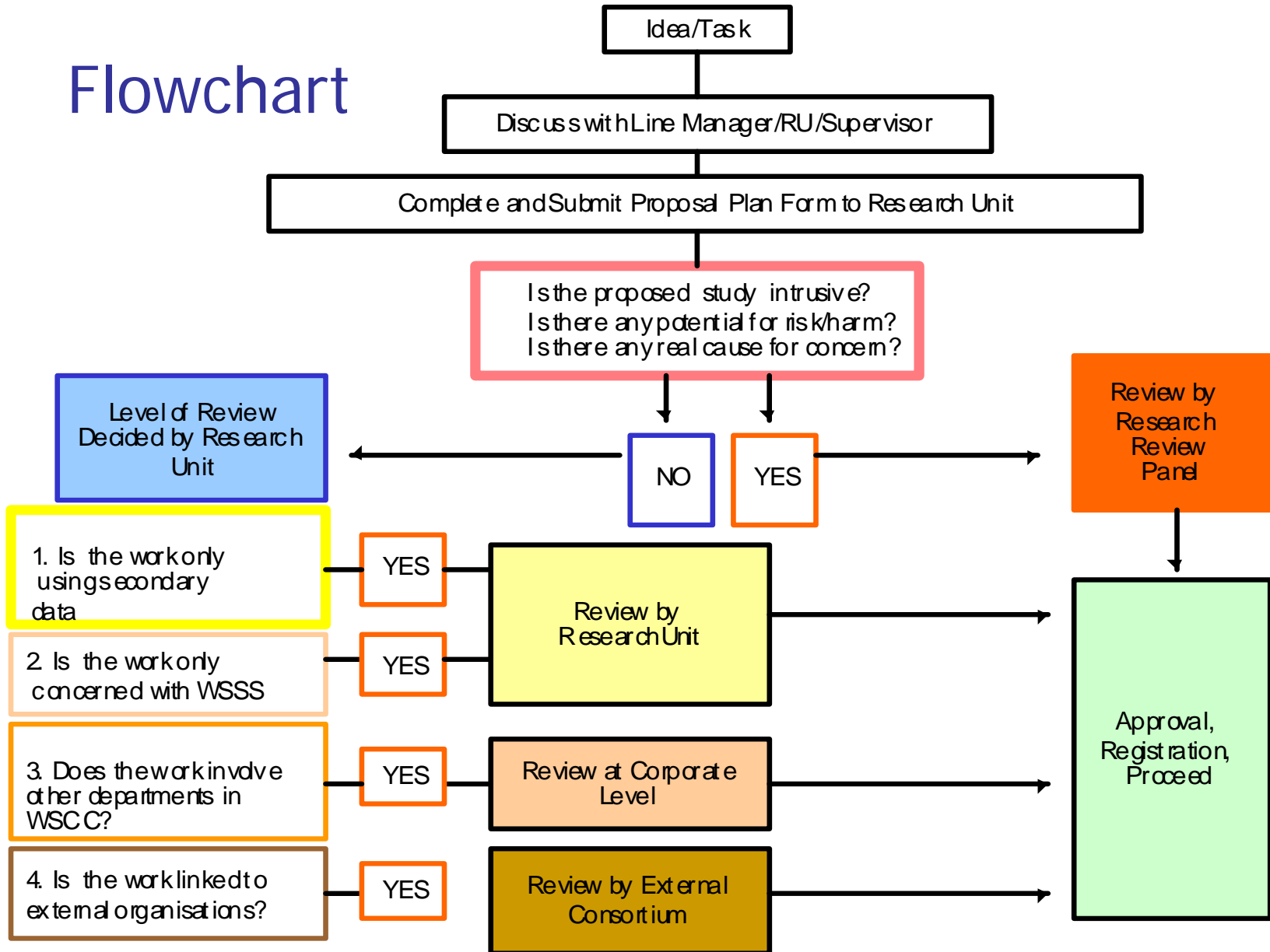
- Projects funded from outside the department or authority
- Projects carried out by someone working within the department or authority.
- Work in connection with Best Value reviews
- Any interviews or surveys carried out with users/carers/staff
- Case File Audits
- Student Projects
- Does not include routine collection of management information



How does it affect me?

- As from March 1st
- Ensure that anyone carrying out/or supervising anyone carrying out any 'research' involving users/carers or staff in West Sussex are aware of our Research Governance policy
- Discuss project with Line Manager/Research Unit
- Submit Project Plan - in application pack
- have plan approved
- have plan registered

Flowchart





RGF- Brighton and Hove

- Led through Adult Social Care Department
- Corporately supported/welcomed
- Use RIG (Research and Information Group)
- Independent expert reviewers
- Forms/process developed

What has helped make this happen



- RIG already existed
- Simple process
- Relies on skilled people being identified
- seen as good practice



What has been (is) difficult

- Advertising the process
- making the process clear
- IER's anxious about workload
- some feel it may stop work
- not compulsory