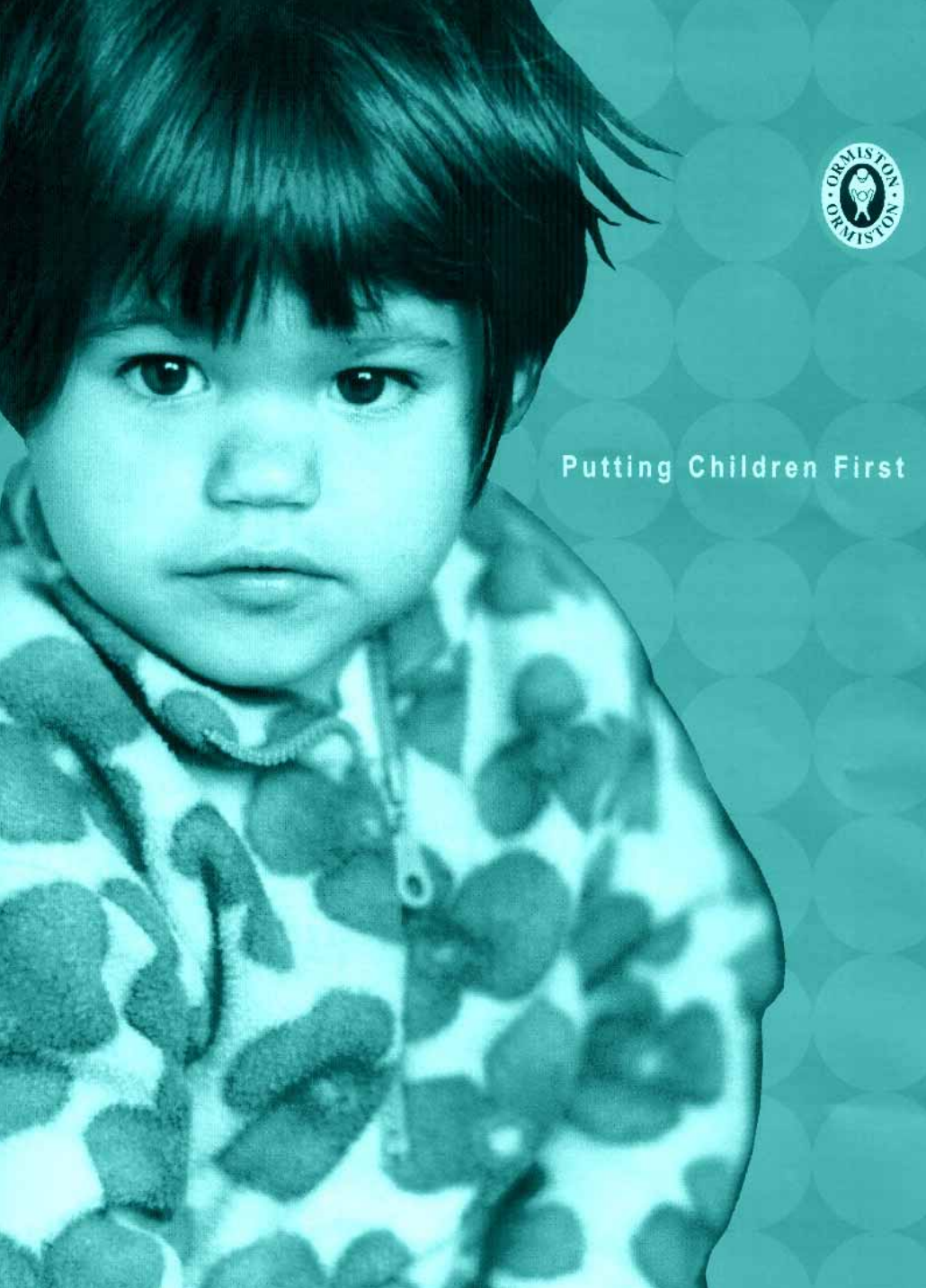




Ormiston Children & Families Trust

Sherry Peck and Camille Warrington
Cambridgeshire Travellers Initiative



Putting Children First

Agenda

- Ormiston & The Travellers Initiative
- EEDA research
- Findings from Research
- Exclusion from research
- Questions

Ormiston Background

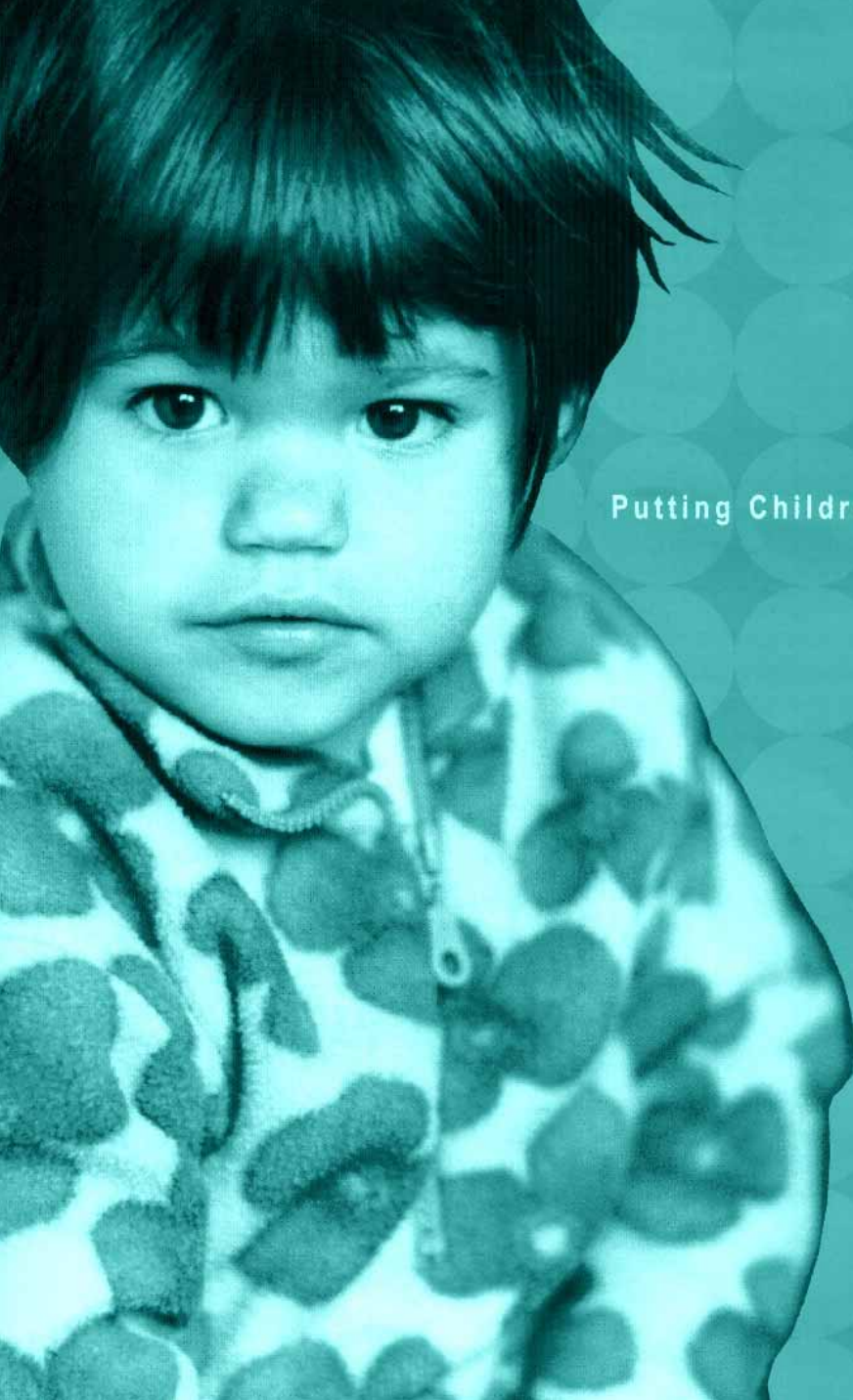
- One of largest voluntary providers of support services to children and families in Eastern Region
- First project opened 1981 - currently run **27 community and prison based projects across five counties**
- Achieved through direct service provision and by raising awareness of related issues through research, publications, conferences and events
- Our mission - to uphold the rights of children & enhance the quality of their lives



Cambridgeshire Travellers Initiative



Always involving Travellers in developing solutions - do *with* not *to*

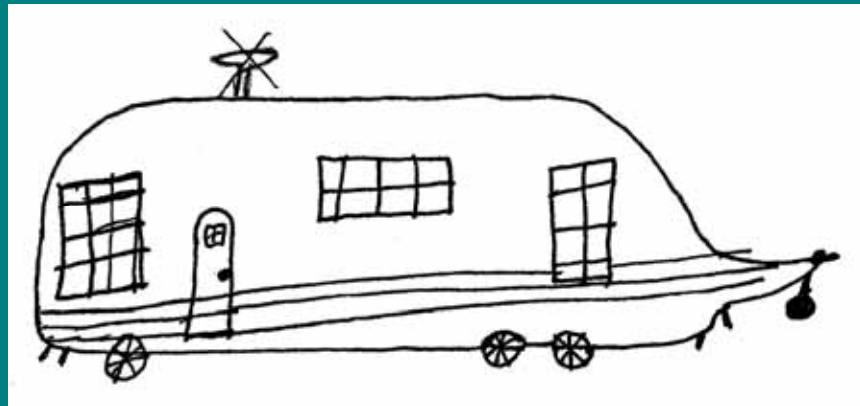


Putting Children First

Romany Gypsies
Travellers of Irish
Heritage
Showpeople
Circus People
New Travellers
Bargees

EEDA Research

- **MOTIVATION:** Stemmed from recognition of multiple disadvantages faced by community and absence from policy and provision.
- **AIM:** Review of literature and service provision relating to Gypsies and Travellers in Eastern Region.
- **METHODOLOGY:** 3 part process.



Accommodation Issues for Travelling Communities

- Lack of accommodation biggest issue facing communities
- High level of homelessness in communities
- 50% of communities living in housing
- 90% of planning applications refused
- Lack of lead from government and local resistance impacts on accommodation provision- both public and private

Accommodation Issues for Travelling Communities

- Conditions on public sites often poor
- Residents licensees rather than tenants
- Lack of accommodation impacts on peoples ability to be nomadic
- Moving into housing - not the answer
- Negative impact of Evictions

Excerpt from Housing Act 1996 in relation to homelessness.

Housing Act 1996 section 175 defines homelessness:

“(2) A person is also homeless if he has accommodation but –

(a) he cannot secure entry to it, or

(b) it consists of a moveable structure, vehicle or vessel designed or adapted for human habitation and there is no place where he is entitled or permitted both to place it and reside in it.”

Education Issues for Travelling communities

- Gypsy and Traveller children are those most at risk within the education system
- OFSTED suggest that up to 10, 000 Travelling children nationally are not even registered with a school
- Racism within the education system
- Parents own experience impacts on attendance
- Gypsy and Traveller communities not reflected within the education system or curriculum

Education

- Mobility impacts on education
- School seen as only offering part of necessary education
- Lack of vocational opportunities
- Distance learning



Health Issues for Travelling Communities

- University of Sheffield's recent study: 'The Health status of Gypsies and Travellers in England (2004)' - first large scale epidemiological study of the health of Gypsies and Travellers in England
- Travellers have significantly poorer health
- More self reported symptoms of ill health than other UK-resident, Minority Ethnic groups and economically disadvantaged White UK residents
- Living in a house was shown to be associated with long term illness, poor health status and anxiety
- Those who rarely travel were shown to have the poorest health

Health

- Low access to preventative health services by Gypsies and Travellers
- Life Expectancy around 50 compared to 78 in the settled community
- Infant mortality 7 to 12 times higher than the settled community



Training and Employment

- Very little research about Gypsies and Travellers and skills and employment exists
- There has been a reduction in some employment opportunities traditionally filled by Gypsies and Travellers
- Current provision of targeted training opportunities to Gypsies and Travellers are limited.



Exclusion and Invisibility

How Gypsies and Travellers are excluded from research, policy and provision



Lack of baseline data

- Key limitation to our research.
- The failure to include Gypsies and Travellers as a distinct group in routine ethnic monitoring procedures: both nationally and locally.
- Existing methods of population data inconsistent and flawed. E.g. Caravan Count, housing needs assessments

Failure to recognise Gypsies and Travellers as a distinct ethnic group

Findings from survey:

“Do you know if Gypsy and Travellers are accessing your service? If so how?”

Job applicants are required to disclose their gender, ethnicity and disability status as part of statutory monitoring requirements. However we do not require applicants to disclose their social background and therefore we have no means of telling whether Gypsy and Traveller communities are applying for jobs with us. (Personnel Dept, Borough Council)” .

- Wide spread ignorance, even amongst those with a specific mandate to work with Minority Ethnic Groups

Failure to recognise diversity within communities

- Gypsies and Travellers in the eastern region are diverse communities.
- Major differences within communities in terms of patterns of accommodation, mobility, access to services and culture.

e.g. Failure to recognise those Gypsies and Travellers who live in housing or on private sites.

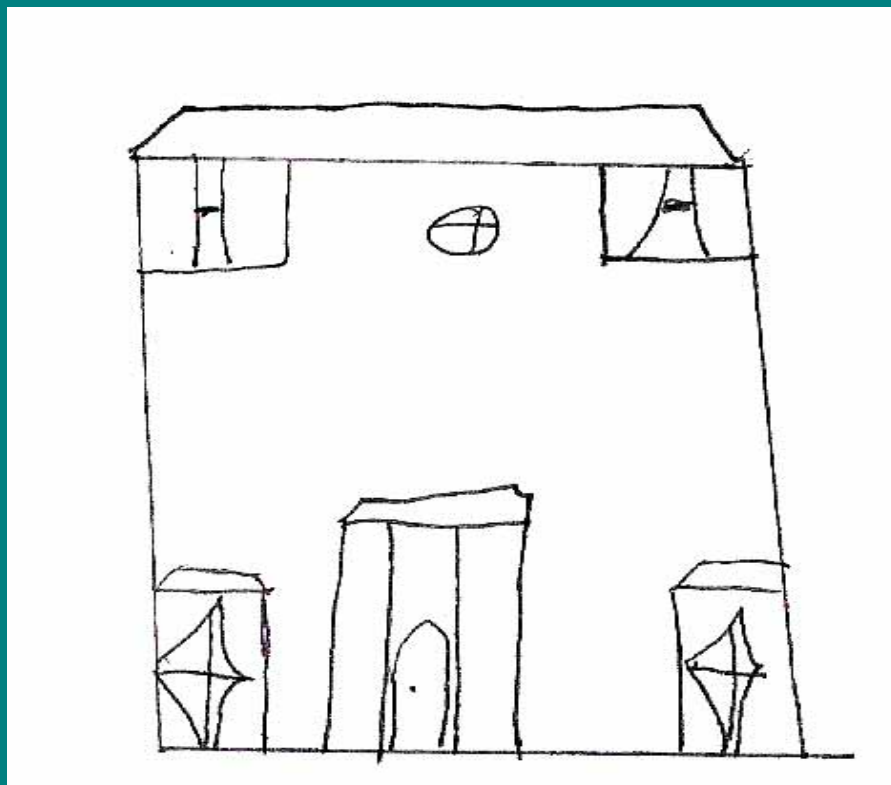
*“Are you aware if Gypsy’s and Travellers are accessing your service?
If so how?”*

- *We do not currently have any public Gypsy/Traveller sites in the district. (local authority)*

Gatekeepers

- Idea that Gypsies and Travellers are a 'hard to reach' group.
- Belief by service providers that they require 'gatekeepers' or specialist training before engaging with the community.
- More extreme: belief by some service providers that can't access community without protection.

- Gate-keeping by those commissioning research.
- Need for community involvement at every level of research – including dissemination.



Small Sampling

Small scale nature of most research.

Research Sampling: Not just about who gets included - about who gets left out;

- The least articulate.
- Those with least access to transport.
- The least confident.
- Those under most time pressure.

Need to think very creatively about how to engage these groups.

* And acknowledge limitations rather than pretending work is representative.



Overview

- Clear picture of Knowledge base
- Visibility/
Invisibility
- National Inclusion Agenda
- How this matters?



THANKS FOR LISTENING
any questions?

