

# I C S Ps: Progress and Good Practice

## Child Protection

Brenda Doyle and Martin Kettle

**Integrated Children's Services**

Growing up in South Lanarkshire Taking the next steps!




# Outline of presentation

- Identify the challenges and drivers
- Outline our approach to ICSP
- Recap on CPC guidance
- Identify South Lanarkshire approach

**Integrated Children's Services**

Growing up in South Lanarkshire Taking the next steps!





"Make no little plans; they have no magic to stir men's blood and probably will themselves not be realized. Make big plans; aim high in hope and work, remembering that a noble, logical diagram once recorded will not die."

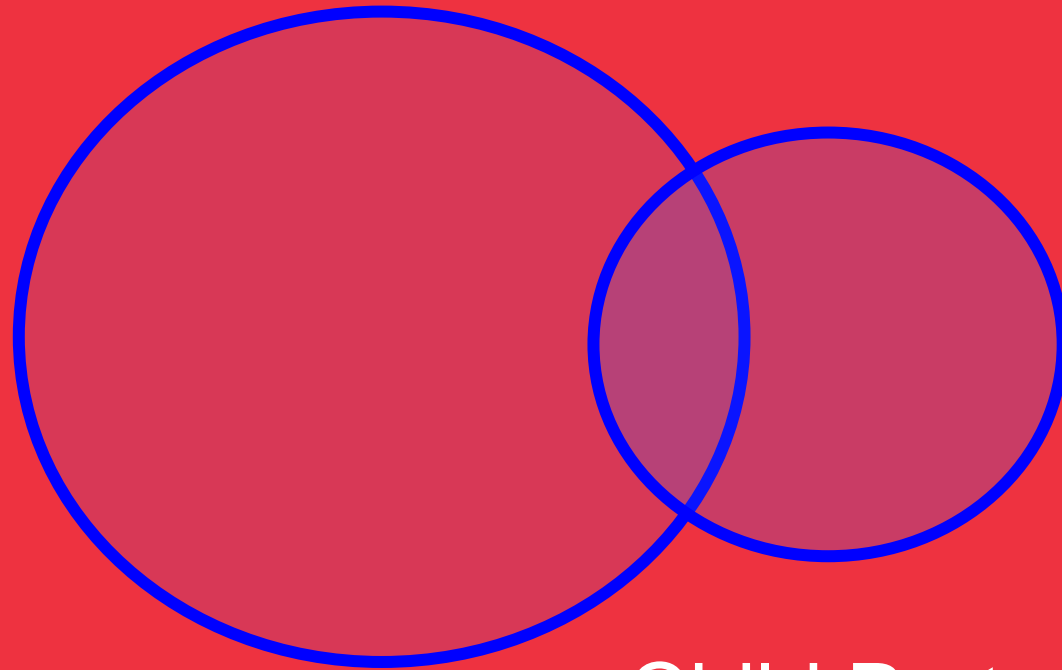
(Daniel H. Burnham 1846-1912)

**Integrated Children's Services**

Growing up in South Lanarkshire Taking the next steps!



# The Challenge



ICSP

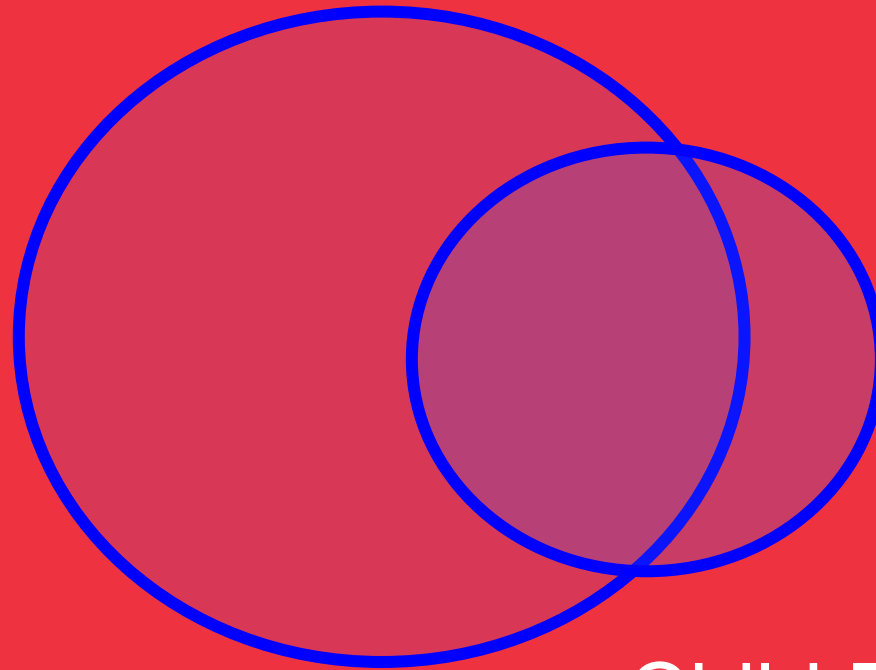
Child Protection

**Integrated Children's Services**

Growing up in South Lanarkshire Taking the next steps!



# The Challenge



ICSP

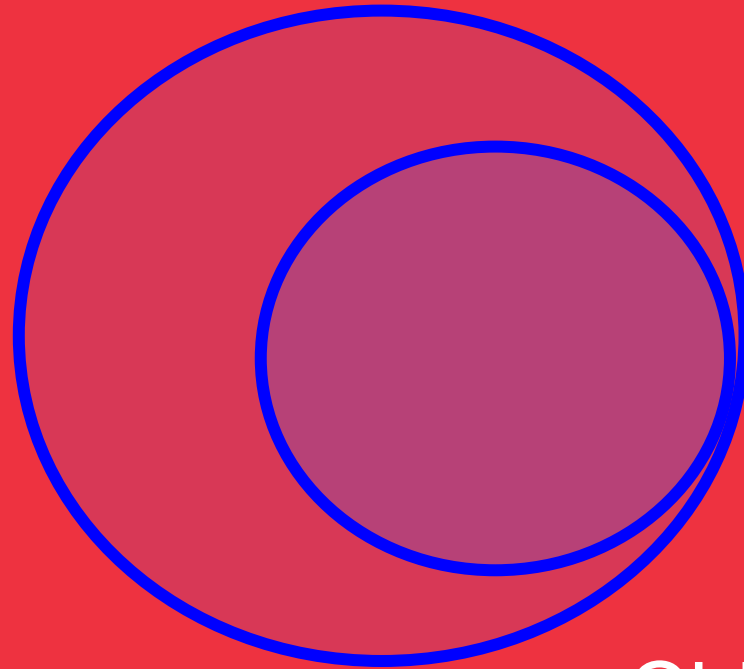
Child Protection

**Integrated Children's Services**

Growing up in South Lanarkshire Taking the next steps!



# The Challenge



Child Protection

ICSP

Integrated Children's Services

Growing up in South Lanarkshire Taking the next steps!



# The Drivers

- “Children get the help they need when they need it”
- Integrated Children’s Service Planning Guidance
- Getting it Right for Every Child
- “It’s Everyone’s Job”
- CPC Guidance
- Chief Officer responsibility

**Integrated Children’s Services**

Growing up in South Lanarkshire Taking the next steps!



# Integrated Children's Services in South Lanarkshire

**Integrated Children's Services**

Growing up in South Lanarkshire Taking the next steps!



# Key Messages of ICS Plan

- Vision for Children's Services
- Integrated Planning & Decision – Making
- Performance Management
- Integrated Assessment
- Funding of Children's Services & Joint Budgeting
- Joint Training
- Co-terminous Planning Areas
- Information Sharing
- Workforce Planning

**Integrated Children's Services**

Growing up in South Lanarkshire Taking the next steps!



# Achievements to Date

Include:

- Established joint planning framework
- Integrated Family Support to over 500 vulnerable families
- Comprehensive review of Child Health Services in NHS Lanarkshire
- Stronger and more robust child protection systems
- Improved community safety for children and young people

**Integrated Children's Services**

Growing up in South Lanarkshire Taking the next steps!



# Integrated Planning

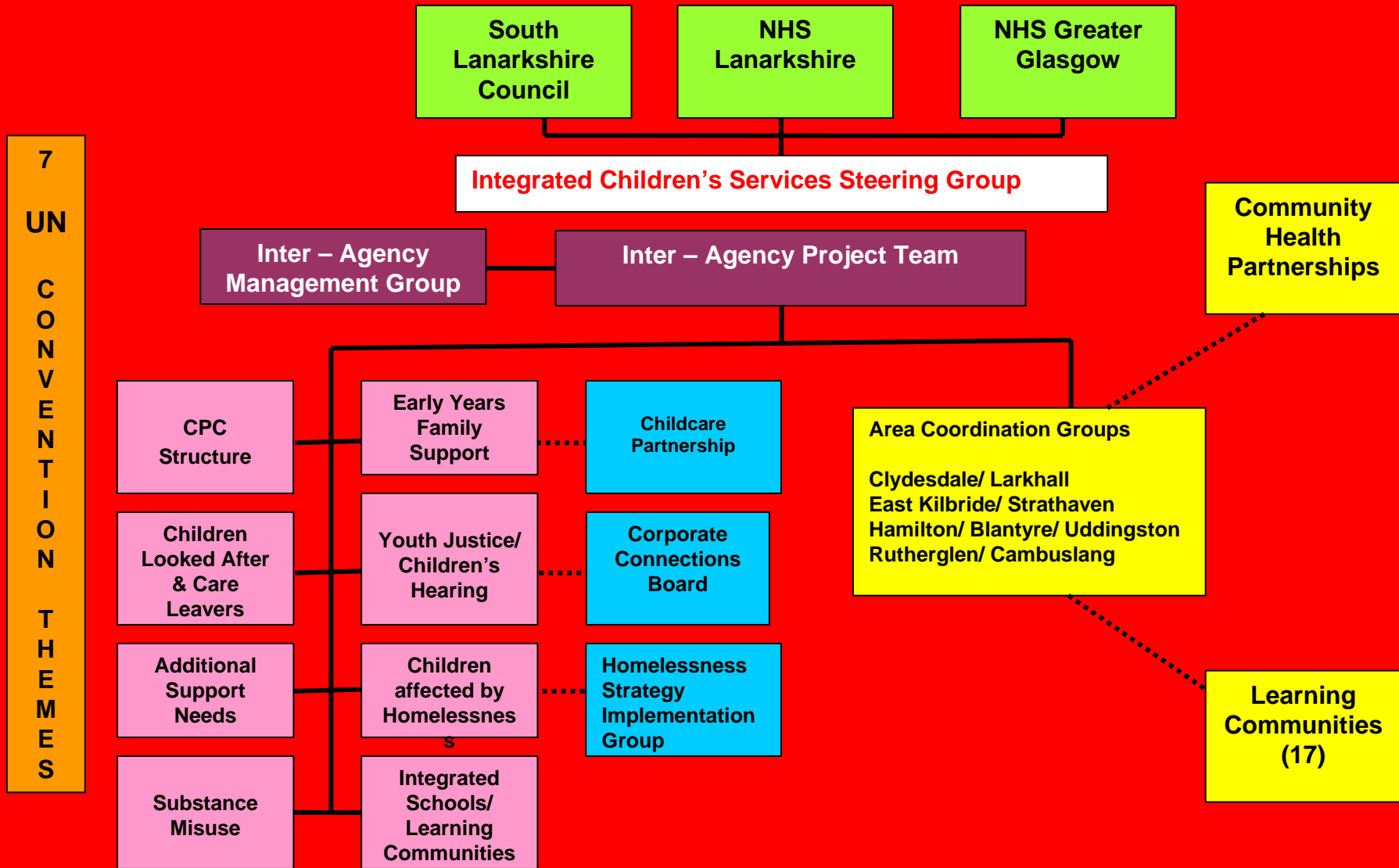
This 3 year plan is charged with ensuring:

- We have an overarching planning statement for children's services
- We have a jointly owned plan with achievable objectives
- We have a process which enables us to drive change and improve service delivery
- We are making inroads to reducing duplication

**Integrated Children's Services**

Growing up in South Lanarkshire Taking the next steps!





Strategic Themes for Integration					
Integrated Assessment	Joint Training	Performance Management	Joint Budgeting	Workforce Planning	Joint I.T.

# Integrated Assessment

- Ensuring children who require multi – agency support receive a co-ordinated response
- Looking at existing agency assessment framework and linking them up into an overall assessment framework
- Better information sharing and clarity of roles
- Identification of key worker
- Training for staff regarding how to use the framework and when it is appropriate

**Integrated Children's Services**

Growing up in South Lanarkshire Taking the next steps!



# Joint Training

- Commitment by partners to look at and identify areas of generic and specialist training across partners
- Agenda driven by the Joint Training Strategy Group
- Big issues to be considered e.g. Child Protection, HALL 4 & Additional Support for Learning
- Ring – fenced budget to support this

**Integrated Children's Services**

Growing up in South Lanarkshire Taking the next steps!



# Co-terminous Planning Areas

- Maintaining and reinforcing the four area structure
- Bolstering locality planning arrangements through Area Coordination Groups
- Regeneration Outcome Areas and Neighbourhood Management Areas
- Looking at the fit with Community Health Partnerships, Learning Communities

**Integrated Children's Services**

Growing up in South Lanarkshire Taking the next steps!



Stonelaw  
Cathkin  
Trinity

Ruth/Camb

Blantyre / Earnock  
Uddingston  
Hamilton Grammar  
John Ogilvie  
Holy Cross

Hamilton  
& Blantyre

East Kilbride

Claremont / Hunter  
Ballerup / Duncanrig  
Strathaven  
St Brides / St Andrews

Larkhall &  
Clydesdale

Larkhall  
Carluke  
Lesmahagow  
Lanark  
Biggar

# Joint Information Sharing

- Further develop the work of the Child Protection MGF Project and roll – out to other areas e.g. Integrated Assessment Framework
- Development of a joint information sharing protocol
- Allow practitioners to have more holistic view of child and use information to help inform decision making
- Manage risk to children identified as vulnerable

**Integrated Children's Services**

Growing up in South Lanarkshire Taking the next steps!





# Key Functions of a CPC

Three key groups of functions:

- public information;
- continuous improvement; and
- strategic planning.

**Integrated Children's Services**

Growing up in South Lanarkshire Taking the next steps!



# Strategic Planning

CPC is the key local body in the planning of child protection work. This is done in conjunction with other planning mechanisms;

Main categories;

- communication and co-operation;
- planning and connections.

**Integrated Children's Services**

Growing up in South Lanarkshire Taking the next steps!



# Communication and Co-operation

Each CPC will:

- promote effective communication and co-operation at a CPC level;
- promote communication between agencies;
- identify and resolve issues between agencies;
- demonstrate effective communication with other inter-agency bodies;
- identify opportunities to share knowledge, skills and learning.

**Integrated Children's Services**

Growing up in South Lanarkshire Taking the next steps!



# Planning and Connections

Each CPC will:

- clearly identify the key links that require to be made;
- identify issues where either joint working would be beneficial; and
- have in place and review joint protocols.

**Integrated Children's Services**

Growing up in South Lanarkshire Taking the next steps!



# Involving Children and Young People and Their Families

- Each CPC will:
- demonstrate that its work is informed by the perspective of young people;
- review and develop their strategy for doing so;
- ensure that children and young people are involved in the development of the CPC.

**Integrated Children's Services**

Growing up in South Lanarkshire Taking the next steps!



# The South Lanarkshire Approach

- Keeping Children Safe subgroup
- Cross- representation
- Review CPC
- Plans that talk to each other
- Chief Officer ownership
- E-Care
- Getting Our Priorities Right

**Integrated Children's Services**

Growing up in South Lanarkshire Taking the next steps!

