

Marion Macleod

City of Edinburgh



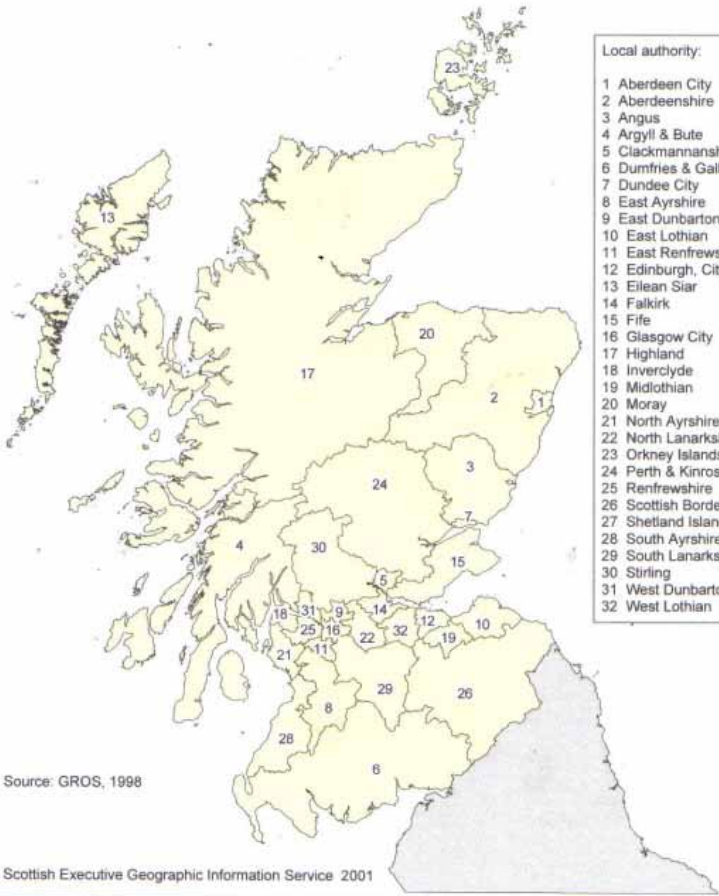
Edinburgh

- *spot the difference*





Local Authority Areas



- Local authority:
- 1 Aberdeen City
 - 2 Aberdeenshire
 - 3 Angus
 - 4 Argyll & Bute
 - 5 Clackmannanshire
 - 6 Dumfries & Galloway
 - 7 Dundee City
 - 8 East Ayrshire
 - 9 East Dunbartonshire
 - 10 East Lothian
 - 11 East Renfrewshire
 - 12 Edinburgh, City of
 - 13 Eilean Siar
 - 14 Falkirk
 - 15 Fife
 - 16 Glasgow City
 - 17 Highland
 - 18 Inverclyde
 - 19 Midlothian
 - 20 Moray
 - 21 North Ayrshire
 - 22 North Lanarkshire
 - 23 Orkney Islands
 - 24 Perth & Kinross
 - 25 Renfrewshire
 - 26 Scottish Borders
 - 27 Shetland Islands
 - 28 South Ayrshire
 - 29 South Lanarkshire
 - 30 Stirling
 - 31 West Dunbartonshire
 - 32 West Lothian

Source: GROS, 1998

Scottish Executive Geographic Information Service 2001

Edinburgh

- *Double the population*
- *Very much smaller in area*
- *Local authority not coterminous with Police, Health , SCRA*
- *Partnership governance*
- *Capital city - relatively resource and infrastructure rich*
- *Mainly urban*

Edinburgh - some relevant issues

- *Only 15 of SMID worst data zones*
- *Child population falling*
- *Private Education sector*
- *Large travel to work area*
- *Service reorganisation*

Community Planning

- *Partnership*
- *Wellbeing*
- *Engagement*
- *Best value*

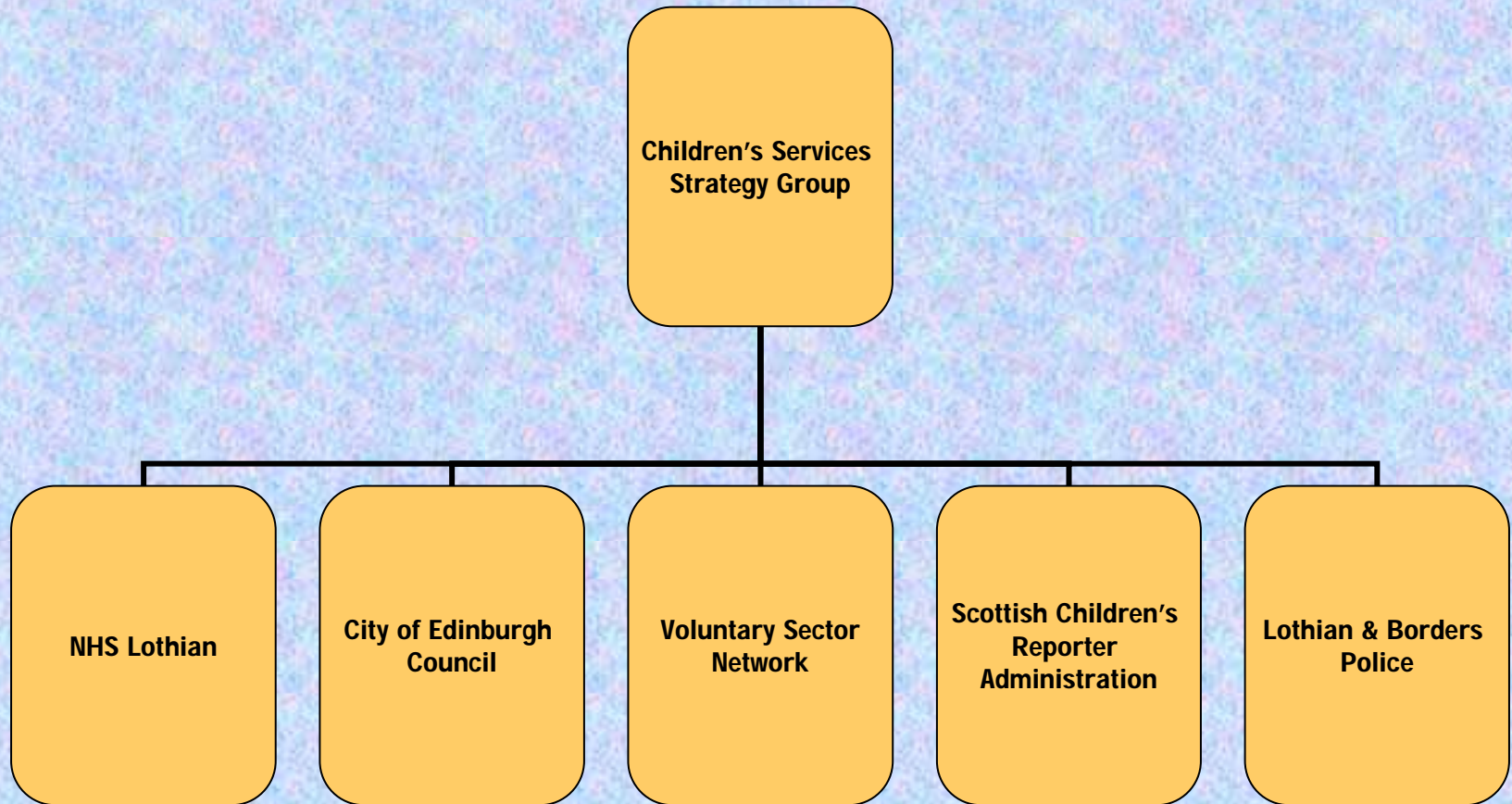
Governance

Edinburgh Partnership
Elected members/equivalents

Edinburgh Partnership Board
Chief Executives/equivalents

Children's Services Strategy Group
Senior Officers responsible for services for children

Governance



Theme 1:

SAFE

Children and young people should be protected from abuse, neglect and harm by others at home, at school and in the community.

Theme 2:

NURTURED

Children and young people live within a supportive family setting, with additional assistance if required, or, where this is not possible, within another caring setting, ensuring a positive and rewarding childhood experience.

Theme 3:

HEALTHY

Children and young people should enjoy the highest attainable standards of physical and mental health, with access to suitable healthcare and support for safe and healthy lifestyle choices.

Theme 4:

ACHIEVING

Children and young people should have access to positive learning environments and opportunities to develop their skills, confidence and self esteem to the fullest potential.

Theme 5:

ACTIVE

Children and young people are active and encouraged to choose rewarding play and leisure opportunities, including sport.

Theme 6:

RESPECTED & RESPONSIBLE

Children and young people are involved in decisions that affect them, have their voices heard and are encouraged to play an active and responsible role in their communities.

Theme 7:

INCLUDED

Children, young people and their carers have access to high quality services, when required, and are assisted to overcome the social, educational, physical, geographic, environmental and economic barriers that create inequality.

Engagement

- *Themed conferences (EP & CSSG)*
- *Voluntary Sector Network (partner & consumers)*
- *Opportunities – structural (Student Councils etc)*
- *Opportunities – occasional (Council reorganisation)*
- *Surveys*
- *Commission*

Best Value

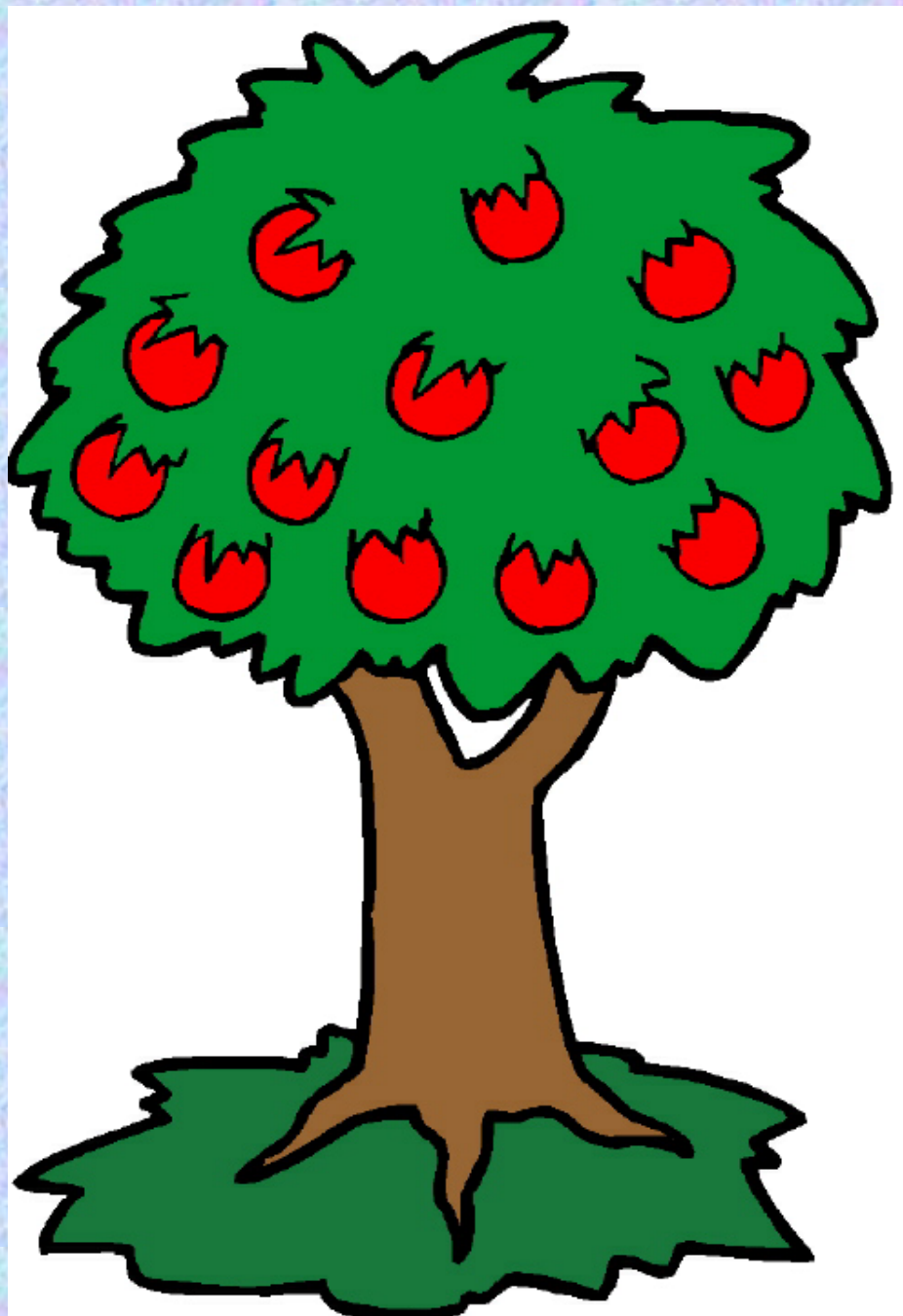
- *Better outcomes*
- *Added Value*

Integrated Children's Services Planning

- *Articulates a programme of shared activity in pursuit of common objectives*
- *Developed in accordance with key principles such as inclusion, early intervention, prevention*

Shared activity

- *Identifying issues and priorities*
- *Developing infrastructure*
- *Operational services*





Didn't we do well?

- *Whole has to be greater than the sum of the parts*
- *Good baseline data*
- *Specific ways of measuring partnership effectiveness*

What next?

- *Review structures, actions, outcomes*
- *Redesign to improve – governance, engagement, communication*
- *Repeat every year*

Thank you!